



Welcome to the:

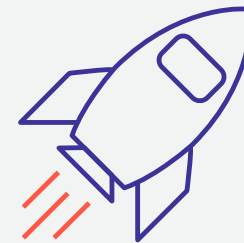
AWS Serverless-First Function

Dr. Werner Vogels
Chief Technology Officer, Amazon

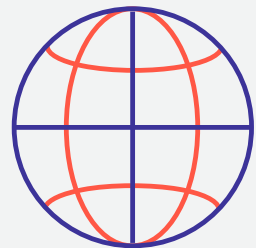
What is a modern application?



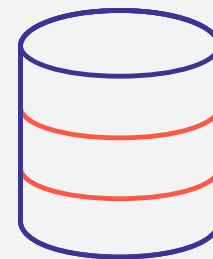
Scales to
millions of users



Responds
in milliseconds

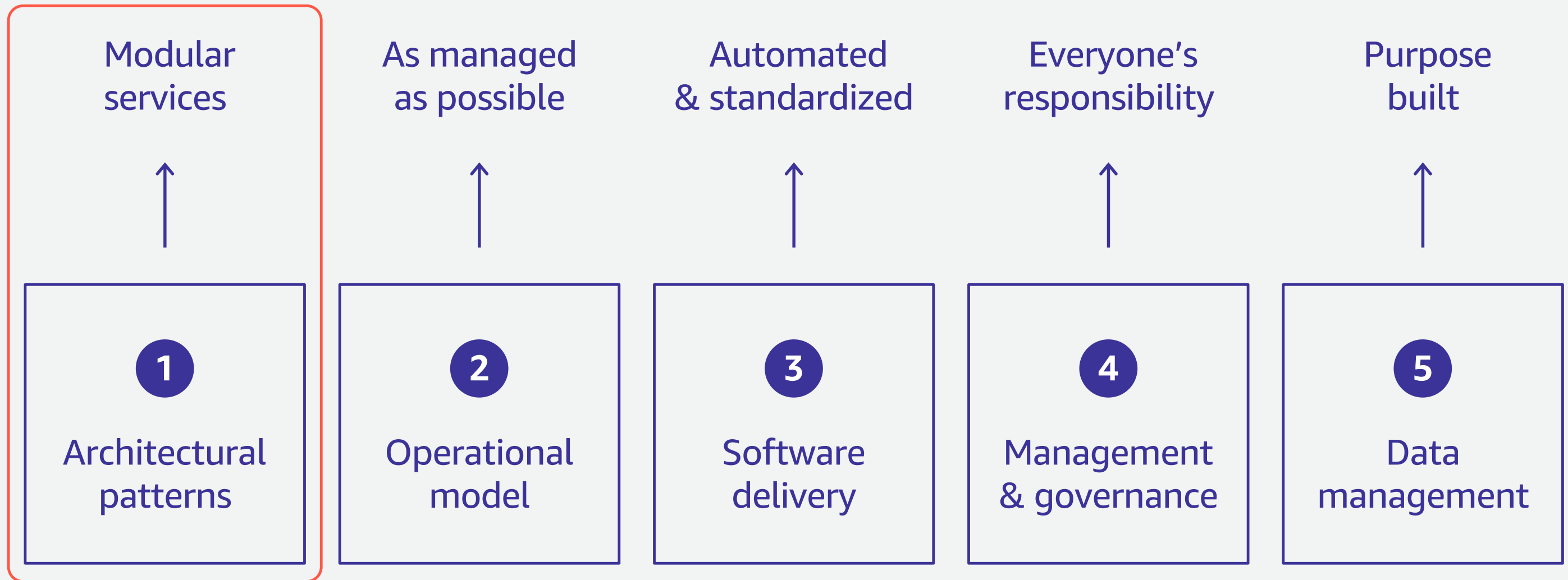


Global
availability

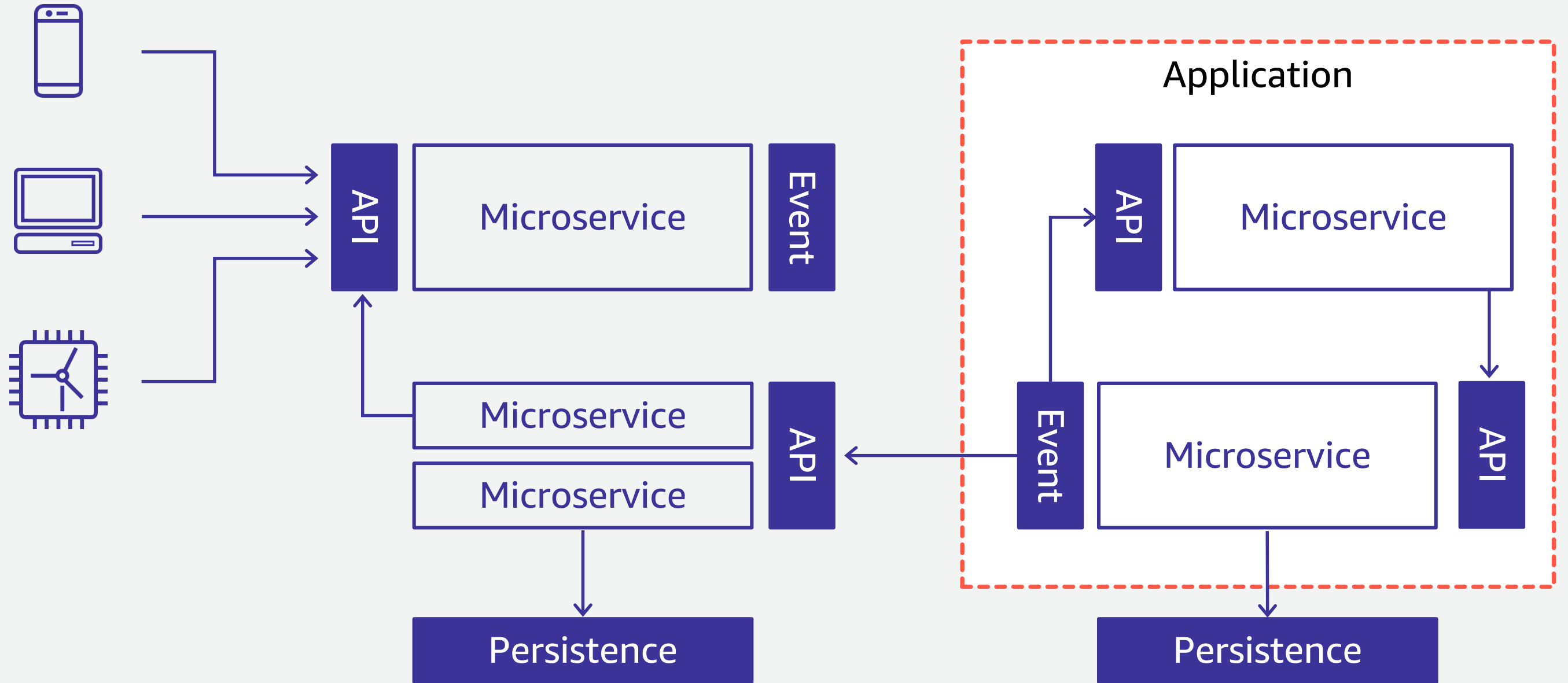


Handles
petabytes of data

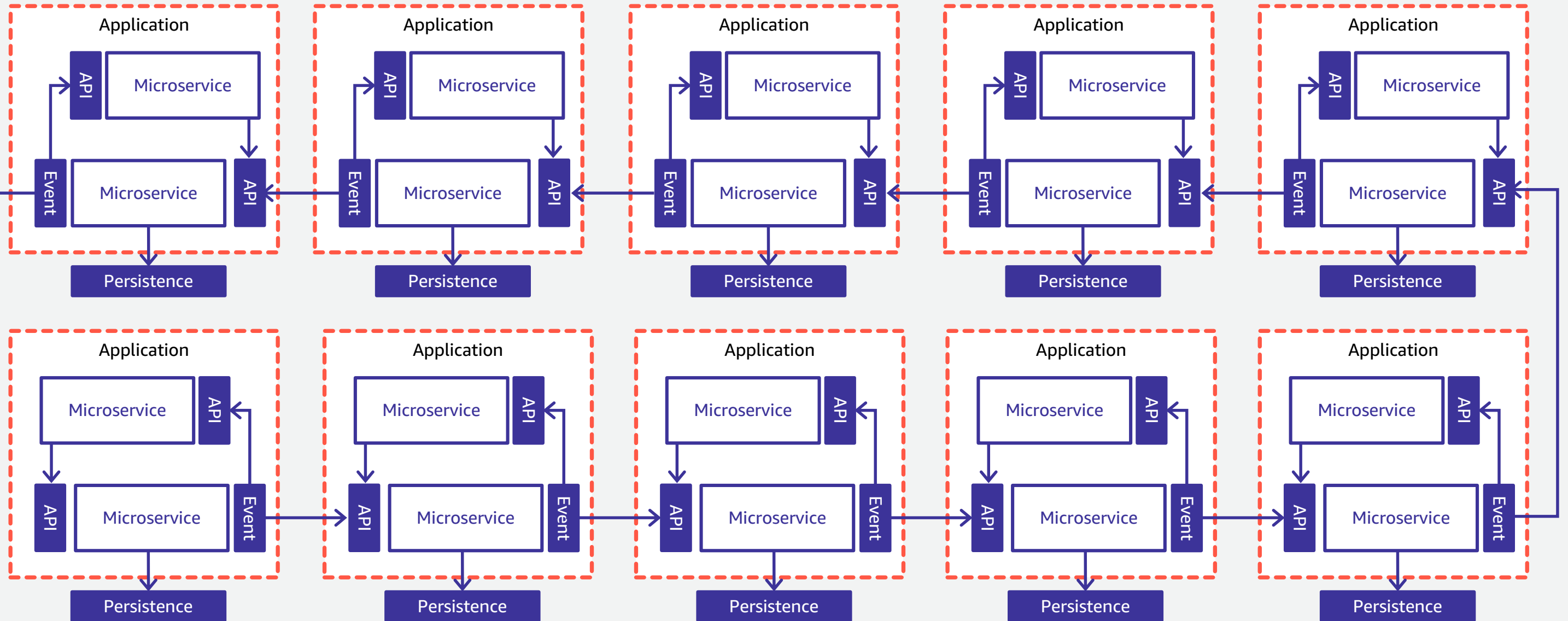
What are the elements of a modern application?



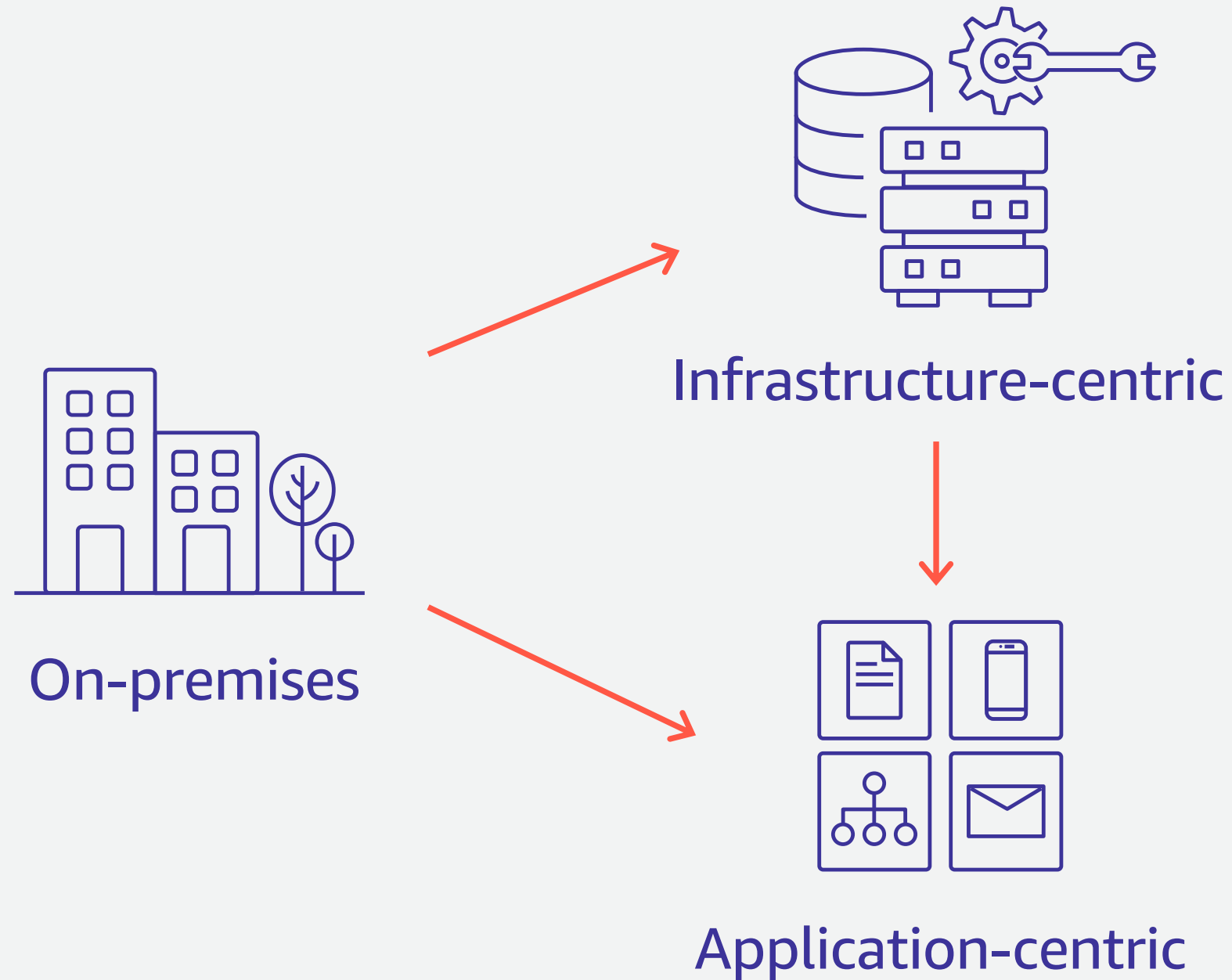
Modular applications at scale



Modular applications at scale

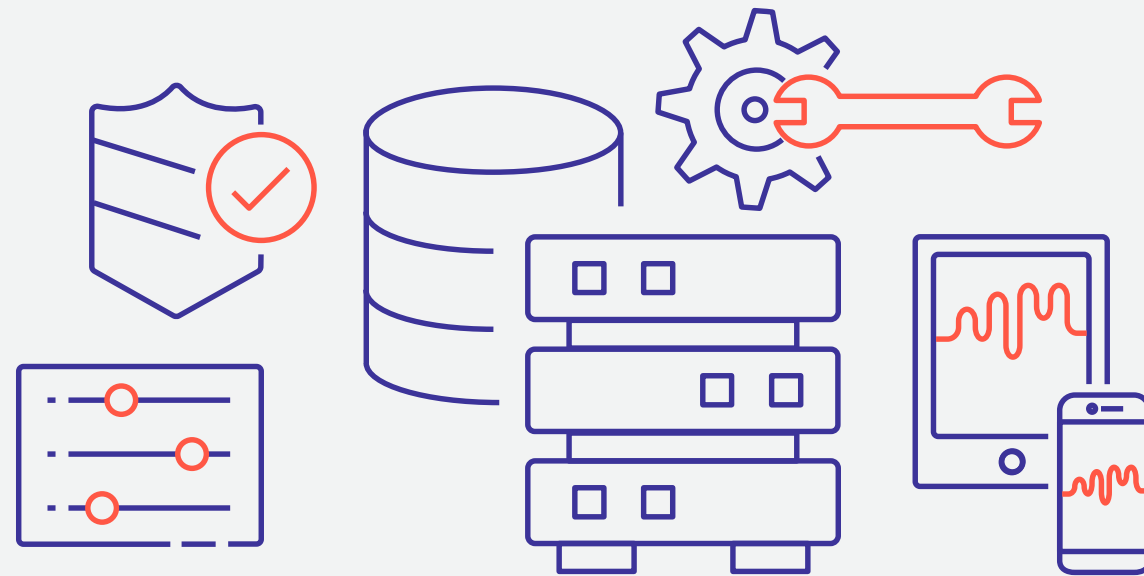


What is the path to modern applications?





On-premises



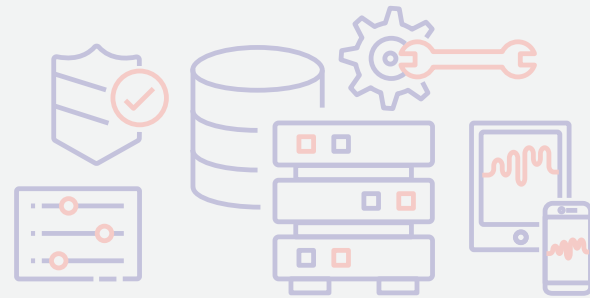
Infrastructure-centric



Application-centric



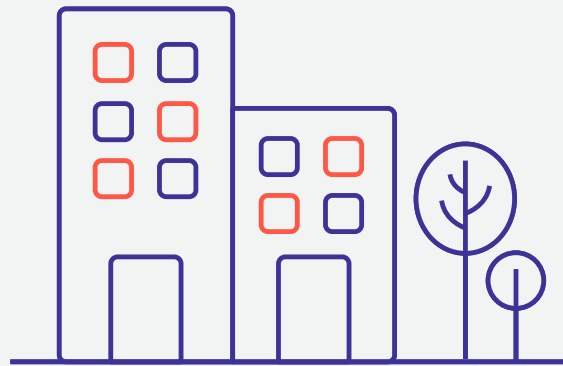
On-premises



Infrastructure-centric



Application-centric



On-premises



Infrastructure-centric



Application-centric



Organizational nirvana

What is a “serverless-first” approach?

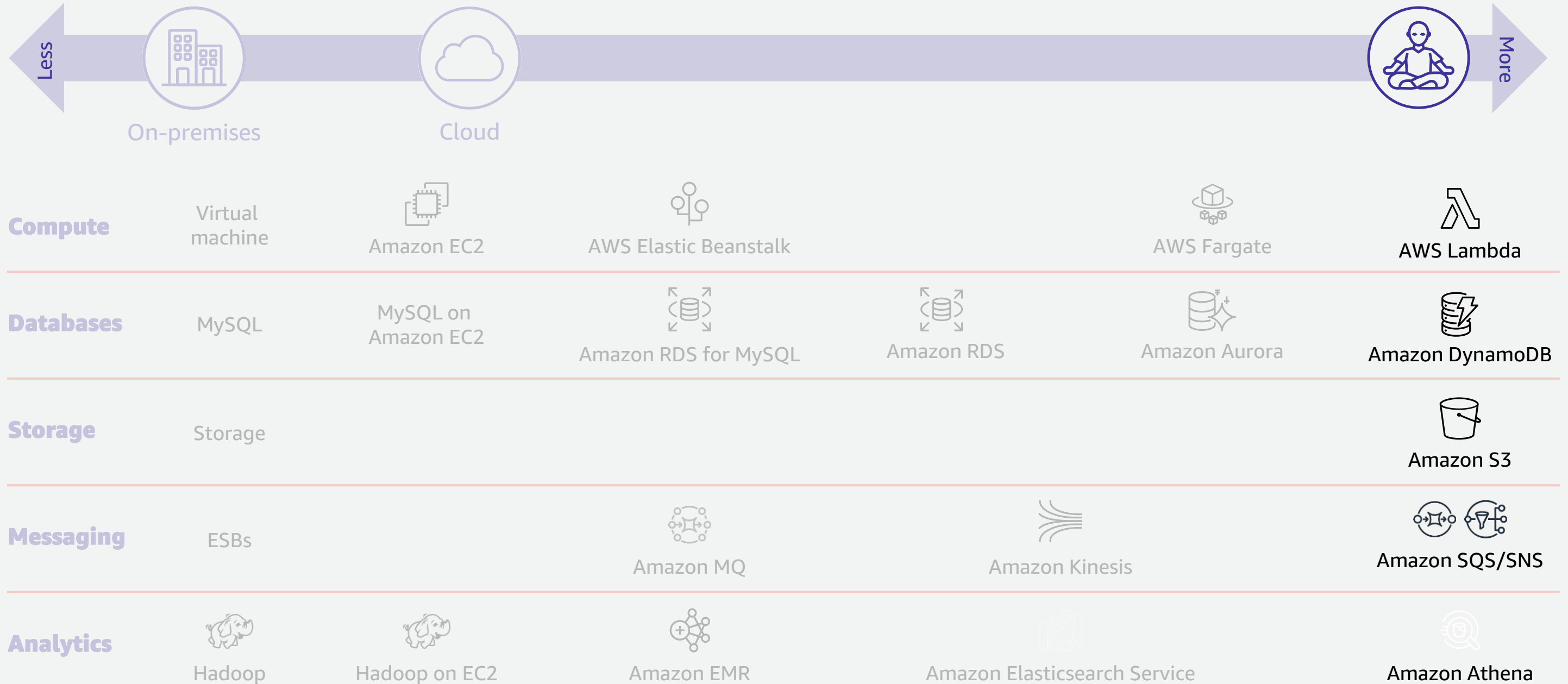


When organizations opt for serverless technologies as their first choice for application design, we call this a serverless-first approach.

Organizations that take a serverless-first approach offload more undifferentiated tasks to managed services, and are freer to focus only on their core business.

Organizational nirvana

AWS operational responsibility models



Serverless changes how we work



Builders

Developers

Focus: Build new solutions



Operators

Process optimizers

Focus: Deployment safety & speed

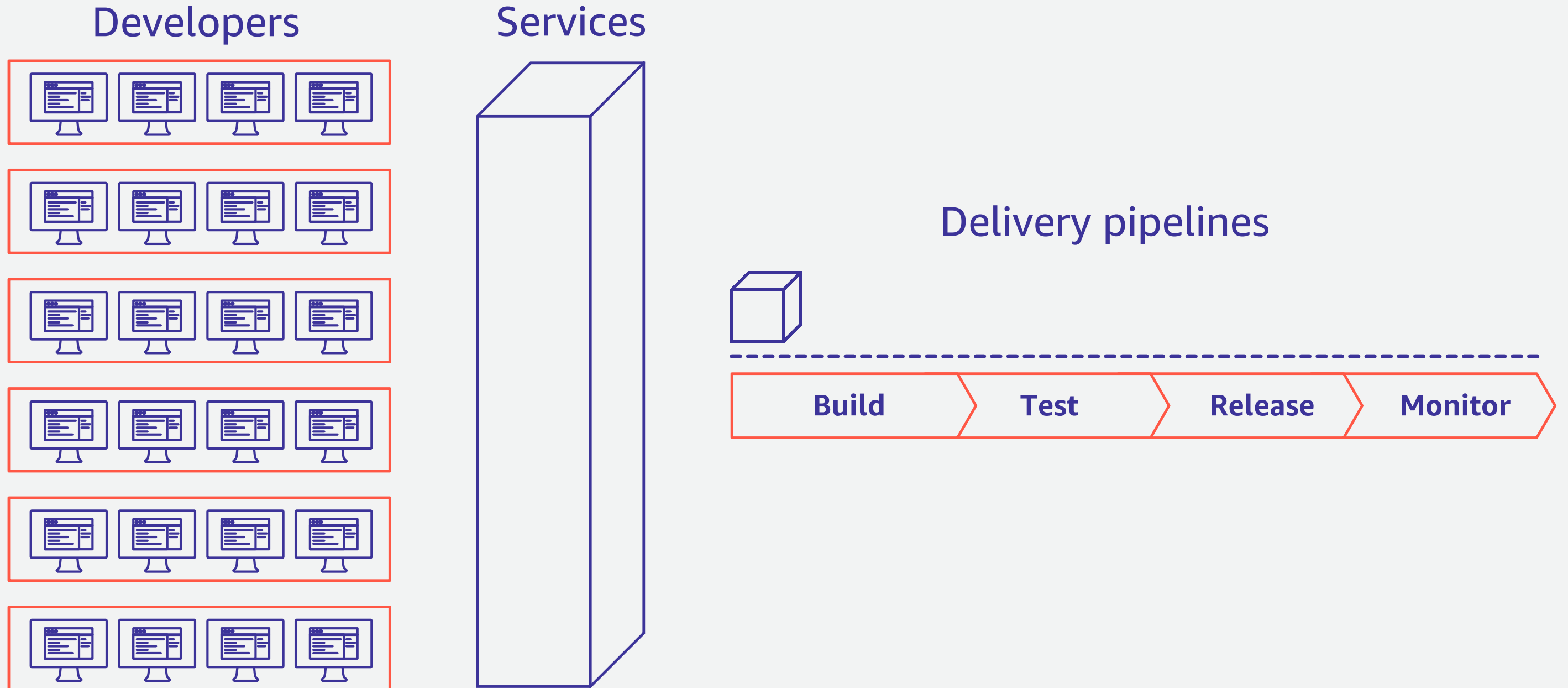


Operations will continue to be important to ensure the long-term success of a product, organization, or even the company itself. But the **thinking** around operations is changing, and along with that, often are the roles of operations teams.



Amazon Builders' Library

Monolith development lifecycle



Modern development lifecycle



Developers



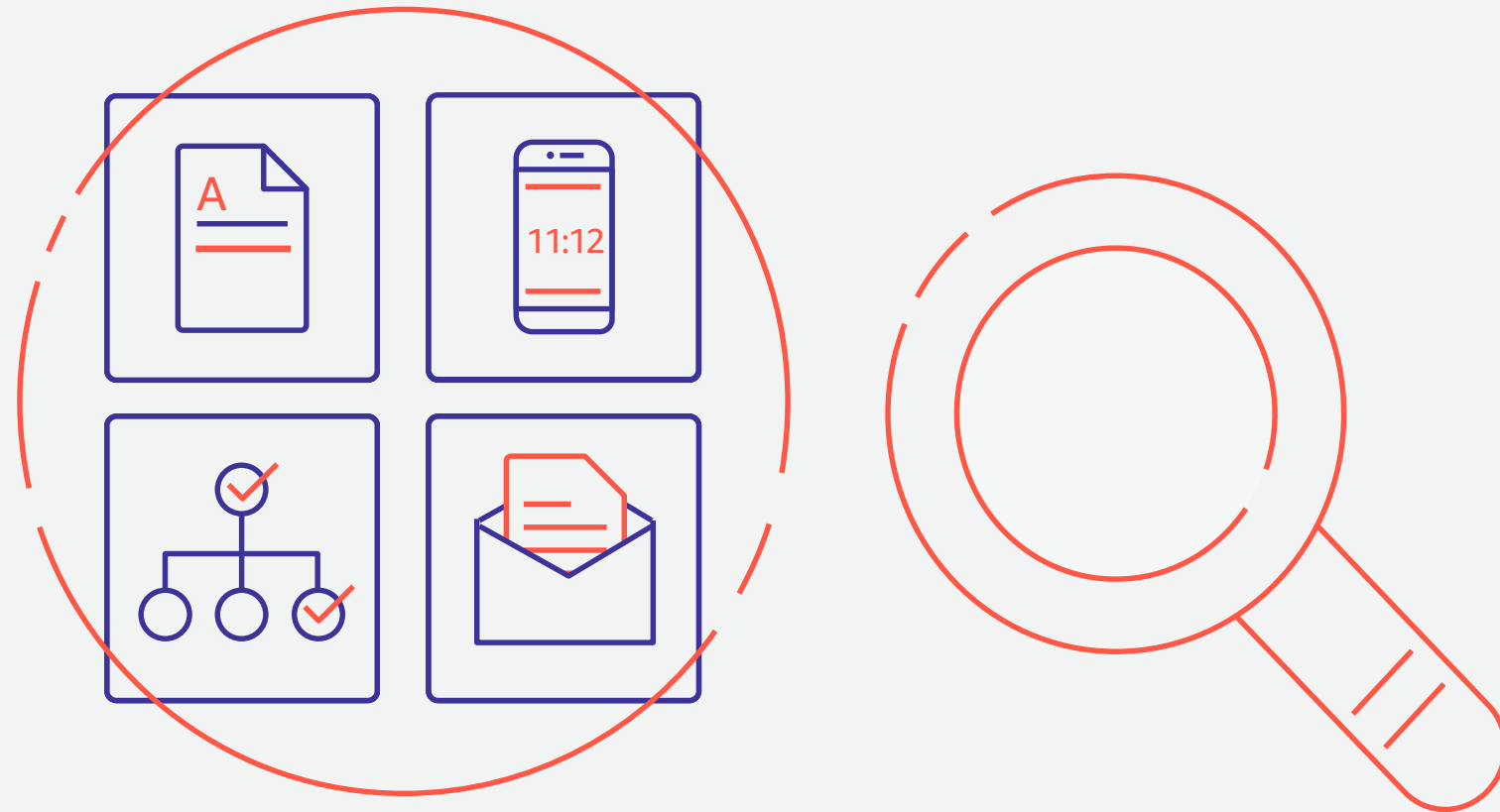
Services



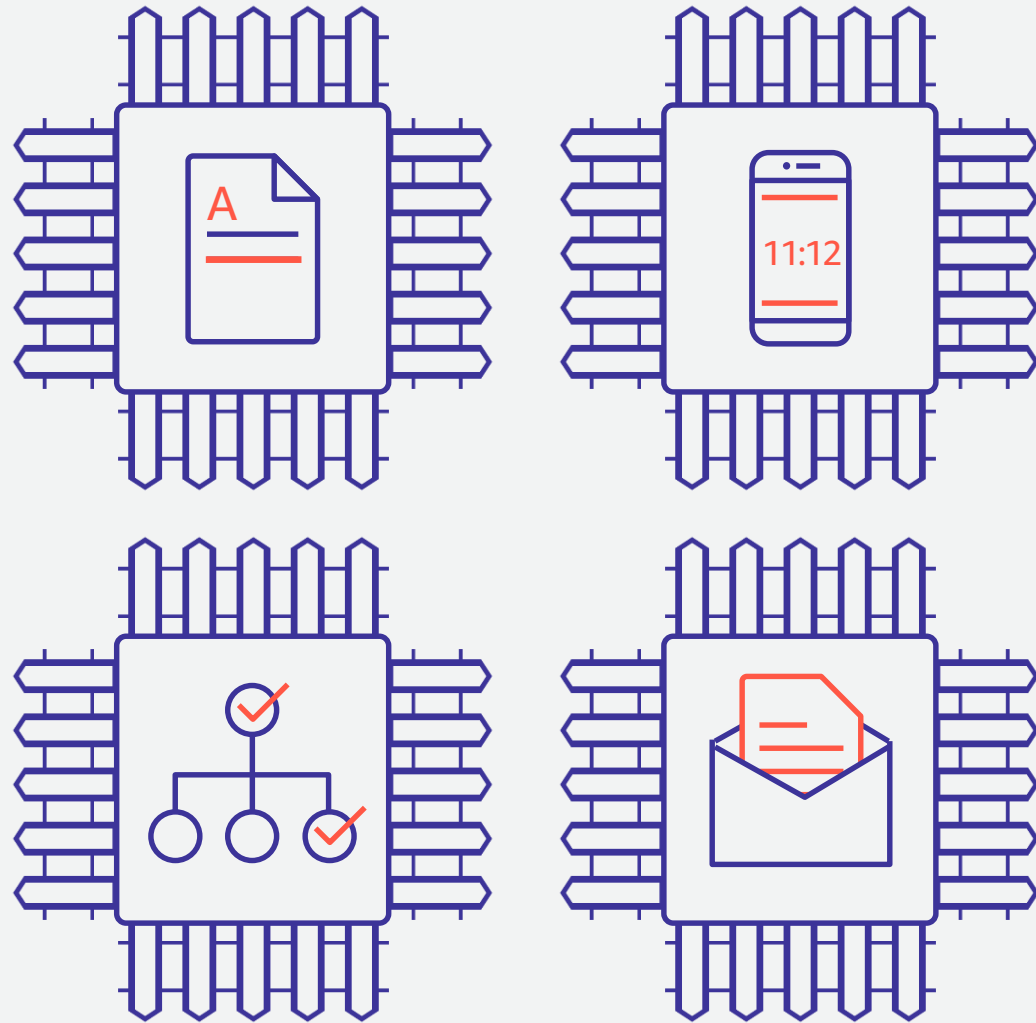
Delivery pipelines



AWS Well-Architected Tool: Serverless Lens

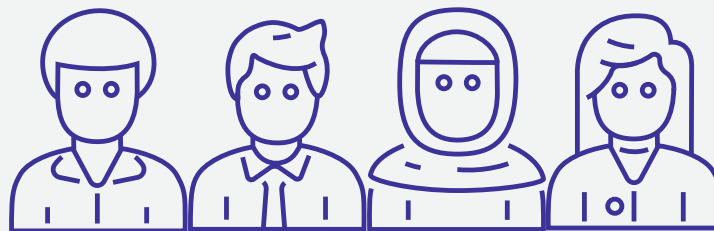
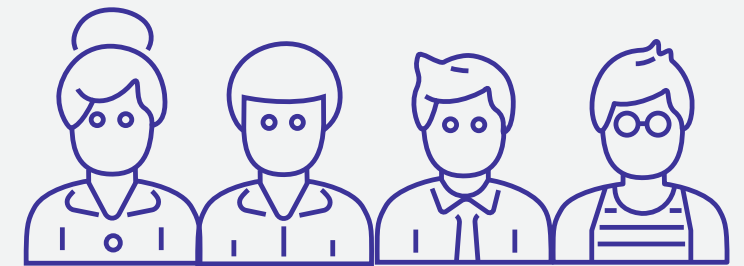
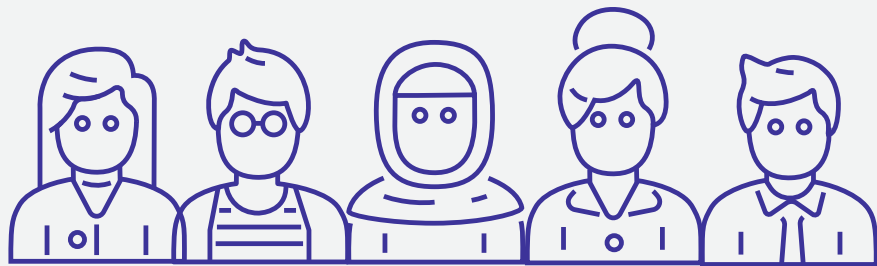
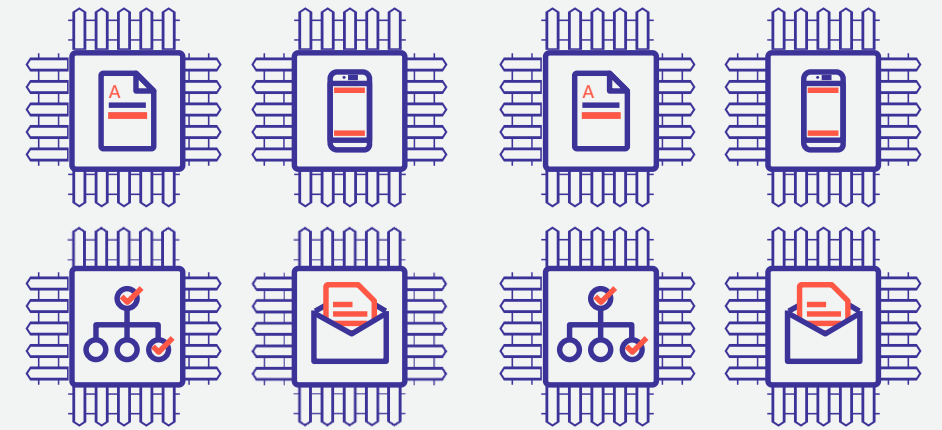
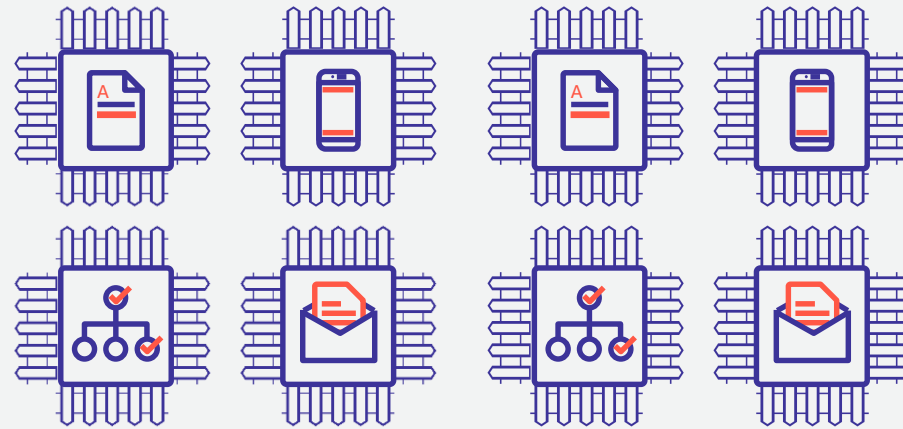
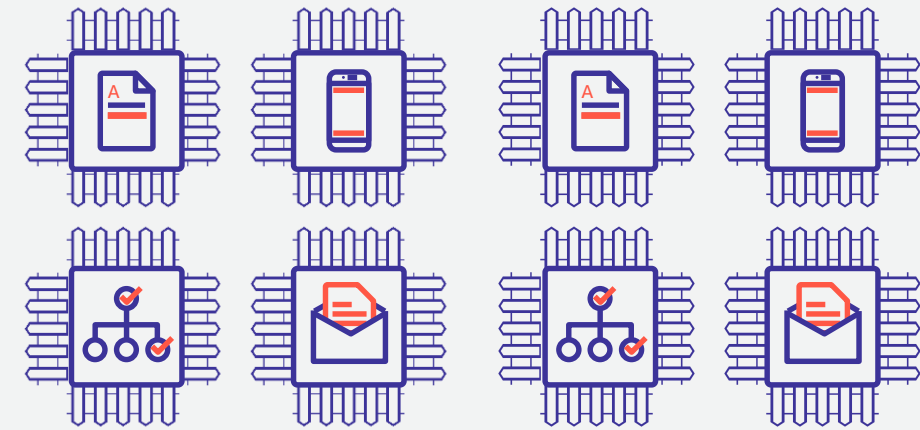


What are guardrails?



Guardrails are mechanisms, such as processes or practices, that reduce both the occurrence & blast radius of undesirable application behavior

Operations thinking: Determining & distributing guardrails





**Now go learn... and go
build.**